

## Newsletter November 2018

### WOUNDS UK SPECIAL ISSUE



#### INSIDE THIS ISSUE:

- The importance of rest for your patients
- Softform Premier Heel Slope now available
- New members in the Think Pressure Care team

Visit us on **Stand 23**  
at The Wounds UK Annual  
Conference,  
5th - 7th November

## Wounds UK

Once again, Invacare's Think Pressure Care team will be attending the **Wounds UK Annual Conference** at the Harrogate International Centre.

Held between the **5th - 7th November**, the established event provides a perfect opportunity for Invacare to demonstrate the **new, exceptionally quiet Active 2 RX pump**, the latest update to the clinically proven **Softform Premier Active 2** hybrid mattress system.

Members of Invacare's TPC team will also be discussing the **Maxxcare Pro Evolution Heelboot**, which is now available in a small size and is listed on NHS Supply Chain. A variety of resources, including a new community clinical evaluation on the heelboot, will also be available.

There will also be a special prize draw to win a luxury '**Sleep Well**' hamper of treats. Visit us on stand 23 to find out more.

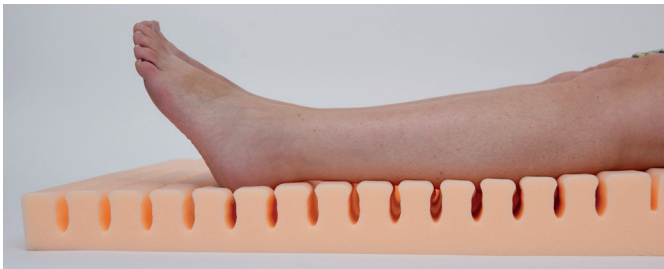


## New Softform Premier targets high risk heel area

Invacare’s popular **Softform Premier** now available with an integrated heel slope

Invacare have recently introduced the **Softform Premier® HS** mattress. Based on the popular **Softform Premier** mattress, the **Softform Premier HS** includes an integral heel slope in the foot section. Designed to address an important risk area in pressure ulcer development, this new mattress offers additional pressure redistribution to the heel area.

The lower third of the mattress has smaller castellations to offer pressure redistribution around the heel area and the foam also has a chamfered design which slopes toward the foot



end to effectively support the lower leg and reduce pressure on the vulnerable heel.

The **Softform Premier HS** has been clinically tested and includes all the hallmarks of Invacare’s popular **Softform Premier** high specification pressure redistributing mattress.

## Maxxcare Pro Evolution Heelboot now available in a smaller size

Due to the popularity of the standard and extra-large **Maxxcare Pro Evolution Heelboots**, Invacare is pleased to announce the addition of a smaller size.

Encompassing all the award-winning features and benefits of the larger heelboots, the smaller size is suitable for patients with an instep contour of **less than 38cm**. A clinical evaluation on the effectiveness of the **Maxxcare Pro Evolution Heelboots** can be found on [www.thinkpressurecare.co.uk](http://www.thinkpressurecare.co.uk).

All sizes of the **Maxxcare Pro Evolution Heelboot** are available on NHS Supply Chain. Invacare and NHS SC order codes for all sizes can be found below:

Invacare Order Code	NHSSC Code	Size
1629930	GTB1731	Small
1578539	GTB1650	Standard
1603210	GTB1651	X Large



## Protect your patients from pressure ulcers in A & E

Following a recent review of our Pressure Area Care range, Invacare is pleased to announce the introduction of a new **trolley mattress** that is compatible with the **Arjo Lifeguard 50 trolley**.

Suitable for those at ‘**High Risk/Very High Risk**’ of developing pressure ulcers, the foam core has independent geometrically-cut surface cells that help to reduce shear and friction, whilst increasing the overall support surface for vulnerable patients. The mattress benefits from

a fully removable top and base cover for easy replacement and cleaning.

The codes for all of the components can be found below:

Product Code	Description
1629893	Complete Mattress for Arjo Lifeguard 50 trolley
1630054	Top Cover
1630055	Bottom Cover



## The importance of rest for your patients

Sleep, and rest, have long been identified as essential in maintaining good health and a recent clinical study suggests that good sleep patterns may improve a patient's ability to heal a wound<sup>1</sup>.

Whilst there are many environmental factors such as lighting and temperature that can negatively impact upon an individual's ability to peacefully sleep, the control unit of a therapeutic support surface should not.

To help facilitate uninterrupted sleep, Invacare has recently launched the exceptionally quiet **Softform Active 2 RX pump** which helps to transform the **Softform Premier Active 2 mattress** into a dynamic therapeutic support surface.

By immediately converting the static high specification foam surface of the **Softform Premier Active 2** into an alternating surface, the **Active 2 RX** helps to create an effective therapeutic support surface without compromising on patient comfort or sleep quality. The combination of a high specification castellated foam interface and specially designed bow shaped air cells produce a comfortable support surface which enhances pressure redistribution and is suitable for all patient groups. With a noise level of less than 24 decibels, the 'plug 'n' play' **Active 2 RX pump** quickly and quietly delivers additional levels of pressure redistribution to those at 'Very High Risk'\* of developing pressure ulcers.

Experience the exceptionally quiet **Softform Active 2 RX pump** on **stand 23** at The **Wounds UK Annual Conference on the 5th - 7th November**. There will also be an opportunity to win a luxury 'Sleep Well' hamper of treats.

1. Tracey J. Smith et al. Impact of sleep restriction on local immune response and skin barrier restoration with and without 'multi-nutrient' nutrition intervention, Journal of Applied Physiology, 2017

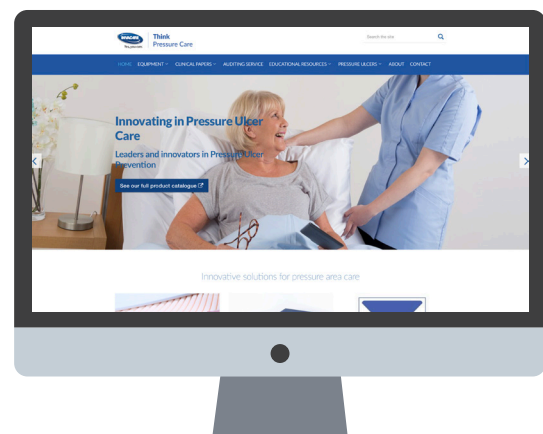
\*The risk category in this instance is based on the Waterlow Scale.

## New resources on Invacare's dedicated Think Pressure Care website

Think Pressure Care has always been focussed on delivering education and raising awareness of pressure ulcer prevention and treatment.

Continuing this commitment, we are pleased to announce the availability of new resources. These include the addition of '**best practice**' posters. These posters bring together best practice statements and guidelines for support surfaces into a digestible, useful format.

Visit [www.thinkpressurecare.co.uk](http://www.thinkpressurecare.co.uk).





## New members for the TPC team


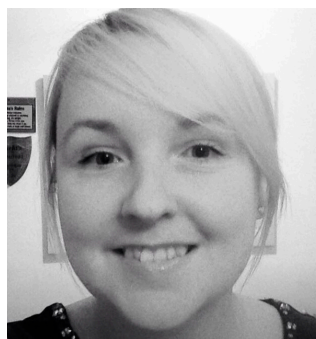
It's all change for Invacare's Think Pressure Care marketing department as we welcome 2 new members onto the team.

Following a restructure, Ashton Evans, formerly Product Specialist for Safe Patient Handling, will now be additionally supporting the Pressure Area Care product range as Senior Product Specialist.

Ashton will be joined by new recruit, Kim Reid, who has joined Invacare as Associate Product Specialist. Kim joins Invacare from PRA Health Sciences,

where she was responsible for operating clinical trials. Using her wealth of clinical knowledge, Kim will assist in the marketing and management of Invacare's pressure area care division.


**We wish both Ashton & Kim good luck in their new roles.**



**Stuart Baillie**  
National Sales Manager  
07977 980 724  
sbaillie@invacare.com



**Scott Kirsopp**  
North East & Cumbria  
07506 487 828  
skirsopp@invacare.com



**Richard Mears**  
Scotland  
07929 027 547  
rmears@invacare.com



**Kurt Johnson**  
North West  
07979 001 459  
kjohnson@invacare.com



**Jamie Lissaman**  
Midlands and East  
07973 836 382  
jlissaman@invacare.com



**Beulah Pope**  
Wales and South West  
07977 980 709  
bpope@invacare.com



**Matt Ashdown**  
South East and Southern  
07970 842 324  
mashdown@invacare.com

[www.thinkpressurecare.co.uk](http://www.thinkpressurecare.co.uk)

### Are you following us on Social Media for all our latest news and updates?

We regularly update our platforms with the latest useful information. If you want to keep track of the latest industry news visit [www.thinkpressurecare.co.uk](http://www.thinkpressurecare.co.uk)



**Did you know that we are now on Facebook?**  
Search Invacare UK and join the community



**Follow us on Twitter:**  
@Tpressurecare



**Follow us on LinkedIn:**  
Think Pressure Care Think Invacare



**Follow us on YouTube:**  
Invacare Ltd - UK

Invacare Ltd,  
Pencoed Technology Park, Pencoed,  
Bridgend. CF35 5AQ  
T: 01656 776 222  
F: 01656 776 220  
E: [thinkpressurecare@invacare.com](mailto:thinkpressurecare@invacare.com)  
[www.thinkpressurecare.co.uk](http://www.thinkpressurecare.co.uk)  
[www.invacare.co.uk](http://www.invacare.co.uk)